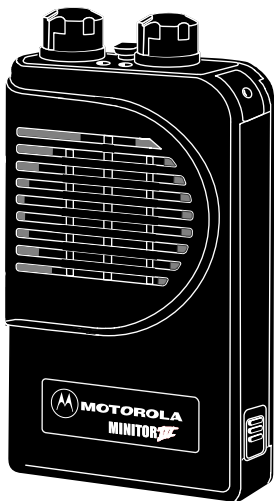




MOTOROLA

MINITOR *III* **SELECTIVE CALL ALERT MONITOR RECEIVER**



USER'S GUIDE

INTRODUCTION

Congratulations on your purchase of the Motorola MINITOR III Alert Monitor. Motorola's advanced technology offers unique features and benefits that set the industry standards for performance, reliability, and styling. The compact alert monitor is offered in a variety of models including:

- One-Frequency Standard.
- One-Frequency Standard with VIBRA-Page™.
- Two-Frequency with Scan.
- Two-Frequency with Scan and VIBRA-Page.

Other options are available to provide a wide selection of features and special applications.

INSPECTION

Verify the model number and customer specific information located on the label on the back of the alert monitor.

Inspect the equipment thoroughly. If any part of the equipment has been damaged in transit, report the extent of the damage to the transportation company immediately.

BATTERY TYPES

The alert monitor is powered by two rechargeable Nickel-Cadmium or two alkaline 'AAA' size batteries.

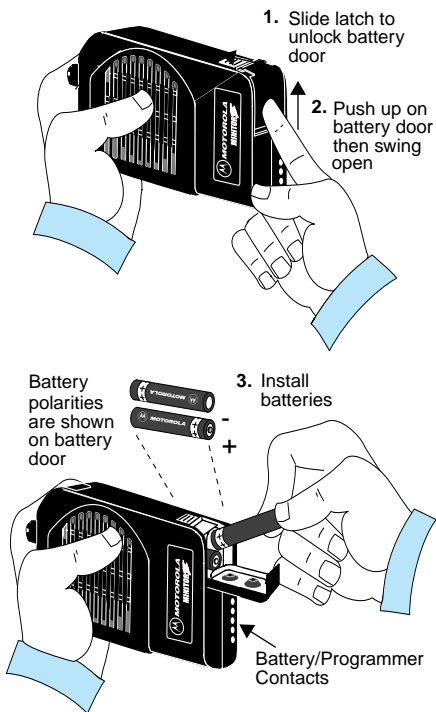
BATTERY INSTALLATION

NOTE

For optimum performance, the nickel-cadmium batteries must be fully charged before operating your alert monitor.

Install your batteries as follows:

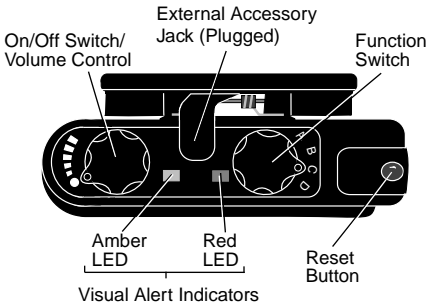
1. Slide the battery door latch towards the top of the alert monitor to unlock the battery door.
2. Push up on battery door, then swing open.
3. Observing the correct polarities, insert the batteries into the battery compartment.
4. Close the battery door, push down into place, then slide the door latch to the locked position.



CAUTION

If the batteries are improperly installed, the alert monitor will not function and the batteries will not charge.

STANDARD FEATURES AND CONTROLS (All Models)



ON/OFF Switch/Volume Control

The ON/OFF SWITCH/VOLUME CONTROL is a combined single control located on the top of the alert monitor as shown above. Turning the control knob a few degrees in a clockwise direction applies power to the receiver, and an audio beep is sounded to indicate that the alert monitor is turned on. As the control is rotated in a clockwise direction, the volume level of any received message and alert tone is increased. Rotating the control in the opposite (counterclockwise) direction reduces the audio level, and turns the alert monitor off.

Audible/Visual Alert Indicators

When your alert monitor is initially turned on, both the red and amber LEDs on the control panel light and an alert tone is sounded until the decoder circuit power-up is complete. Thereafter, whenever a properly encoded message is received, the red LED flashes and an audio alert is sounded. If the battery voltage falls below the level required for reliable operation, a low battery pulse tone sounds and the red LED flashes. Following any subsequent audio message, the momentary low battery pulse tone is repeated until the batteries are replaced.

If the function switch is set to a vibrate position, just the red LED flashes to indicate a low battery state.

Function Switch

According to the specific model ordered, the function switch will be configured to 2, 3, or 4 positions. Different function modes (monitor/selective call, scan, etc.), can be configured for any position of the switch.

Channel Monitoring

When the function switch is set to a monitor position, all voice communications on the selected channel is heard through the speaker. When monitoring channel 1 or 2, all ordered alert options are functional.

Reset Button

After receipt of a properly coded message and after completion of that message, the alert monitor reverts to carrier squelch monitoring. Press the reset button to return your alert monitor to the standby mode.

External Speaker Jack

When the alert monitor is used in high-noise environments or when privacy is needed, an optional Motorola approved lapel speaker or earpiece can be connected to the external accessory jack located on the top control panel. The jack is fitted with a protective plug.

NOTE

To prevent entry of dust and moisture, the plug should be inserted whenever the external accessory jack is not being used.

Belt Clip Feature

An integral part of the clip on the back of your monitor is a security hook. This hook is intended to allow easy removal of the alert monitor, while at the same time preventing the unit from being pulled off your belt.

Scan (Two-Frequency Models Only)

All alert monitors that are equipped with two frequencies are capable of scanning the two channels for selective call or monitoring purposes. The scan feature may be programmed for either priority scan or non-priority scan. This feature is factory installed as priority scan. Non-priority scan is field programmable.

FACTORY OPTIONS

The options that are described in the paragraphs that follow are limited to those options that affect the operation and/or functional characteristics of your alert monitor. For a complete list of available options, contact your Motorola sales representative or authorized paging system dealer.

Fixed-Alert, Audio-Only Volume Control

When this option is installed, the alert tone is factory preset (non-adjustable) at the maximum volume level. Turning the volume control varies only the voice message volume level.

NOTE

Use of audio accessories is not recommended with this option.

Time-Out Auto Reset

This feature allows the alert monitor to be automatically reset after a predetermined amount of time. This places the alert monitor back in standby mode to help conserve battery power.

FIELD INSTALLED OPTIONS

Several alert monitor field programmable options are available to include the following:

- Non Priority Scan
- Alert Duration
- Priority Alert
- On/Off Duty
- Reset Options
 - Carrier Reset
 - Delayed N Carrier Reset
 - Manual Reset
- Push-To-Listen

Contact a Motorola authorized paging system dealer or call 1-800-548-9954 for the addition of these features.

OPERATION

Perform the following steps to condition your alert monitor for operation:

1. Set the FUNCTION switch to a tone-alert position.
2. Rotate the ON-OFF SWITCH/VOLUME CONTROL clockwise to turn on the alert monitor. Eight short beep sounds occur and both LEDs light, indicating that power is applied.
3. Set the FUNCTION switch to a monitor position.
4. Listen for a transmission and adjust the volume control to a comfortable listening level.
5. If no transmission is heard, hold down the RESET button and adjust the background noise to a comfortable listening level. It may be necessary to readjust the volume when a voice signal is present.
6. Set the FUNCTION switch to the desired operating mode, i.e., selective call tone, selective call vibrate, monitor, scan, etc.
7. Turn off the monitor by rotating the ON-OFF SWITCH/VOLUME CONTROL counter-clockwise until a click is heard and the mechanical stop is reached.

SCAN OPERATION

Priority Scan

If the alert monitor is programmed for priority scan, the frequency programmed as F1 is designated as the priority channel. If there is no traffic on F1, the alert monitor alternately listens to F1 and F2 until a transmission is detected. If a transmission is detected on F1, the alert monitor stays on that channel until the transmission ceases. The alert monitor only decodes tones on the F1 channel. No tones are decoded on the F2 channel.

If the alert monitor detects a transmission on F2, it stops on F2 then listens for transmissions on F1. Scanback time is programmable and can be set to 0.5, 1, or 2-second increments. If a transmission is detected on F1, the alert monitor switches to F1 cutting off any transmission on F2. When switching from F2 to F1, the alert monitor listens for any tones and alerts if the proper tones are detected. It should be noted that the detection of tones is very dependent on the duration of the tone sent over the air. To ensure reliable alerting, it is recommended that this feature only be used when the first tone duration transmitted is one second or more.

During the scan mode, the amber LED blinks fast to indicate transmission on F1 and at a slower rate for transmission on F2.

Non-priority Scan

In the non-priority scan mode, the alert monitor alternately listens on F1 and F2 for any transmission. A transmission on either channel causes the alert monitor to stop on that channel until the signal disappears. In non-priority scan, the alert monitor decodes tones on either F1 or F2 provided the alert monitor has listened to the appropriate channel at the correct time. However, it should be noted that if the alert monitor is listening to traffic on F2 and an alert is transmitted on F1, the alert monitor will not hear that signal until the transmission on F2 is finished. Therefore, an emergency alert could be missed if the alert monitor is listening to traffic on one channel with tones being sent out on the other channel.

BATTERY LIFE

Battery life depends upon the number of calls received, length of each call, capacity and charge of the battery, and the mode of operation.

When the battery voltage drops below an acceptable level, the red LED flashes and a low battery pulse tone is sounded. The LED continues to flash and voice communication deteriorates until the batteries are replaced. If the unit is recharged without being turned off, the low battery alert signal will continue until the RESET button is pressed.

REPAIR AND MAINTENANCE

Your alert monitor, properly handled, will provide quality service for years. However, should it ever require service, call 1-800-548-9954 for instructions.

ACCESSORIES

Motorola offers several accessories to increase communications efficiently and provide many unique benefits. Consult your Motorola sales representative for a complete list of accessories, prices, and applications.

- Desk-top Battery Charger
- Desk-top Battery Charger/Amplifier with Antenna and Relay
- Vehicular Charger-Amp with Relay
- Earpieces
- Extra Loud Lapel Speaker
- Nylon Carrying Case

NOTES

© Copyright 1997, Motorola, Inc. All Rights Reserved. Motorola Customer Owned Messaging, 3301 Quantum Blvd., Boynton Beach, FL 33426, Printed in U.S.A. 07/97, (M), Motorola, MINITOR III, MINITOR III logo, and VIBRA-Page are trademarks or registered trademarks of Motorola, Inc. Contents of this manual subject to change without notice



6881132B23-O